

HOW CAN DIGITAL TECHNOLOGIES AND CRAFTSMANSHIP PROVIDE SOLUTIONS FOR THE HERITAGE SECTOR?

Dr Ann-Marie Carey
Keith Adcock



The Cheapside Hoard



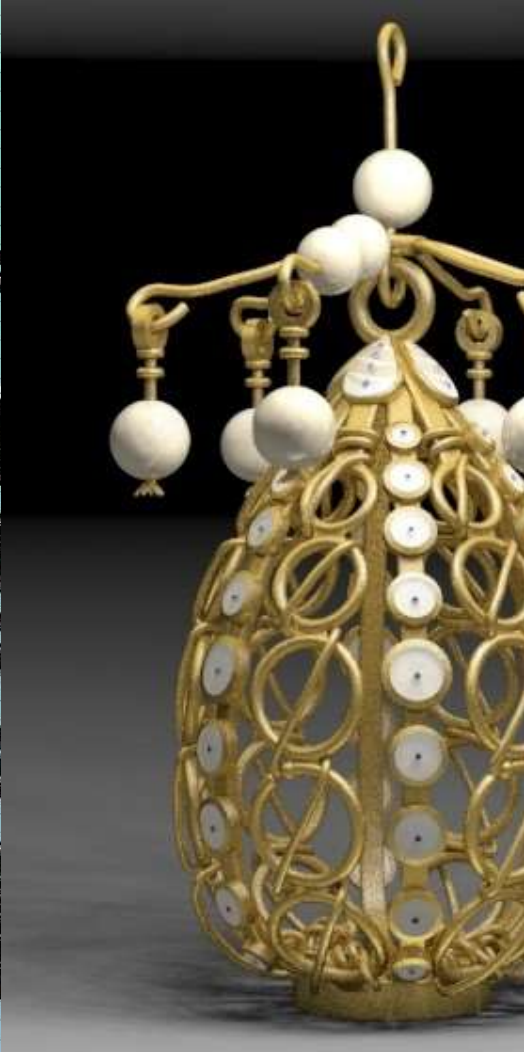
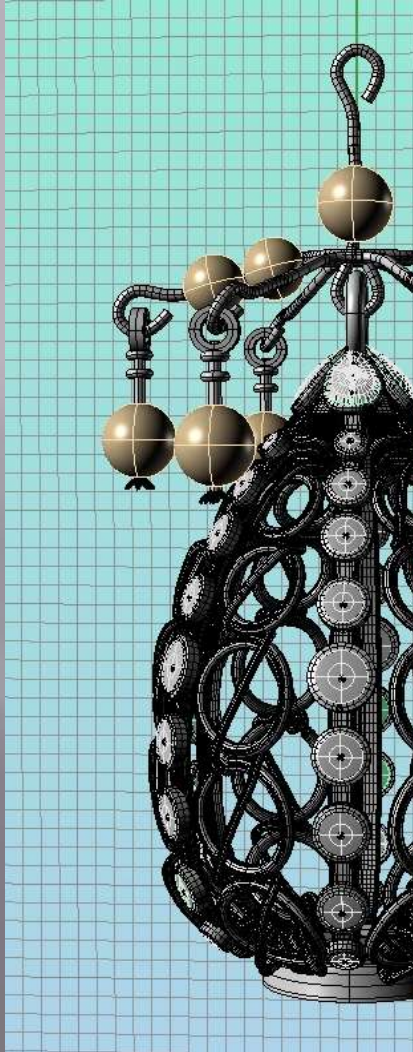
Hoard image MOL

Pearl Dropper A14003 - 50mm height, 18mm wide

Observations



CAD model development



3D Prints wax & DLS



WAX

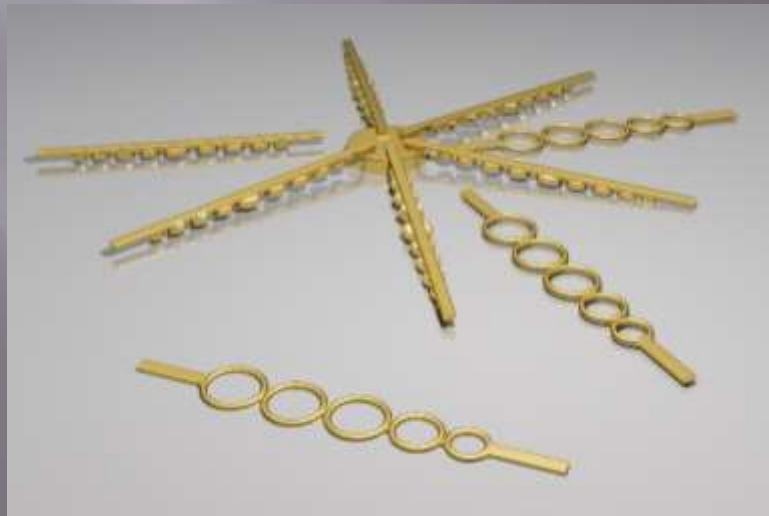


STAINLESS STEEL
HICCUP!



SUPPORTS
REMOVED

CAD Rethink



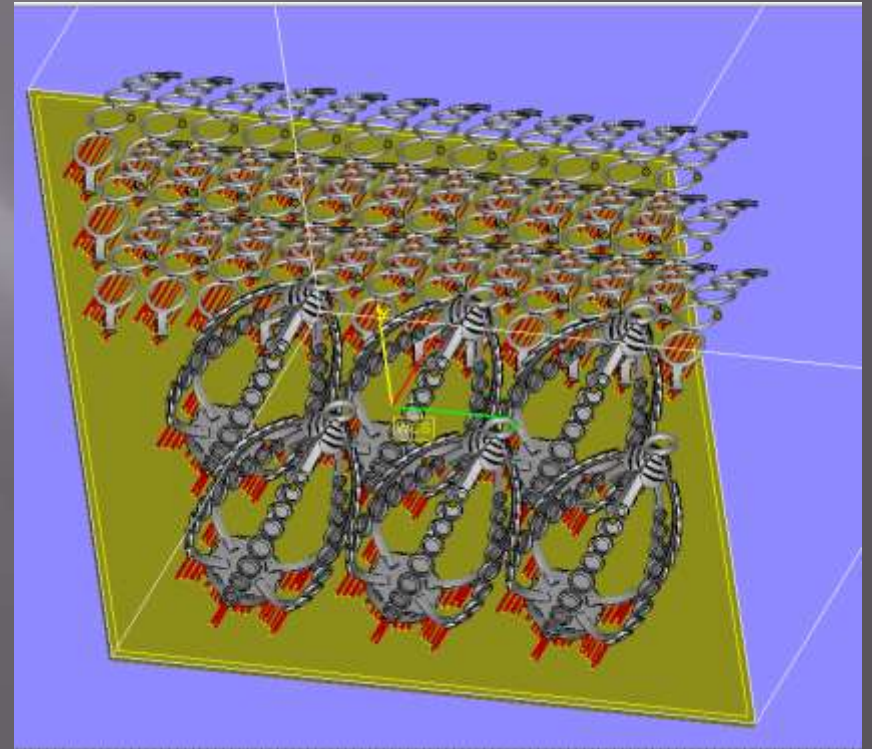
DLS in Bronze



CAD Refinement



Hybrid Approach



DLS print



Colin Cater

ES Technologies



Video Colin Cater

Hand Finishing



Gold plating



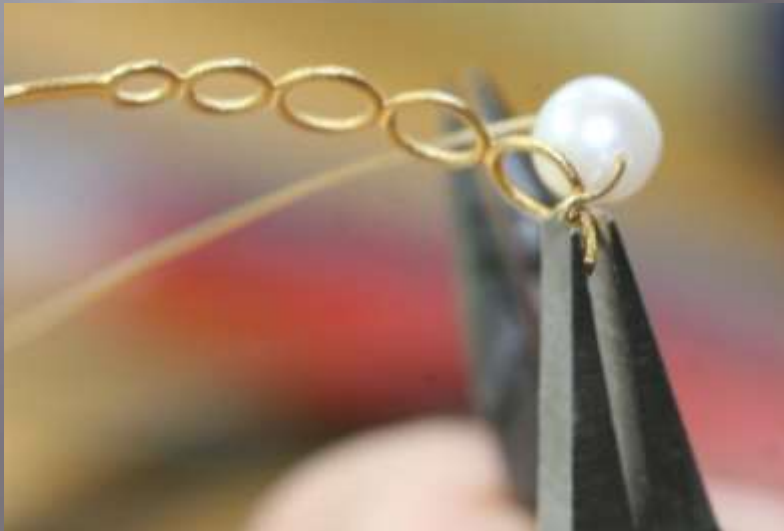
Cold Enamel



Fabrication Jigsaw Puzzle



Threading on graduated pearls



Laser Spot Welding



Surface Texture



Nearly There!



Pearl Finial



Pearl Dropper Handling Exhibit



Pearl Dropper Interactive Exhibit



With thanks to my colleagues



Acknowledgments

School of Jewellery

- ▣ Ann-Marie Carey – Fabrication, LSW, Scribe
- ▣ Keith Adcock – CAD
- ▣ Frank Cooper - Tech Hub
- ▣ Karen Bartlett - Plating
- ▣ Samantha Chilton – Enamel

BCU ADM – Financial Support

Museum of London - Hazel Forsyth

ES Technologies – Colin Cater